



Jewish Family Services
Embracing Possibility.

*2022 Annual Report
July 2021 – June 2022*

CONNECT. HEAL. GROW.

Strength grows in community.

Our Message

CONNECT. HEAL. GROW.

Dear Friends,

Healing is a process. And, the healing process takes time.

Some wounds – the wounds you can't see – are harder to heal; no salve to apply, no bandage to affix. But those wounds can inhibit our ability to articulate our needs, show our emotions, build relationships, keep jobs – and ultimately lessen the quality of our lives.

The mission of *Jewish Family Services* is to *enhance and strengthen quality of life through the Jewish tradition of caring and compassion*. For the past 110+ years, JFS has been healing invisible wounds by supporting our community members through a caring and compassionate healing process.

The fascinating thing about healing is that the process is, paradoxically, completely unique, and yet universal at the same time. We all must do the work individually, in our own way – but the work is necessary for all. There are simply no short cuts. No magic pill. No exemptions allowed. But, for people with support, from family, friends, and professionals trained to help, healing is possible. With support, the healing process can be quicker, feel empowering, and make someone stronger than when they first started.

That is what JFS is here to do: Help people *heal*.

We proudly present to you, in this annual report, a snapshot of what the healing process has meant for our clients. We do so with so much gratitude in our hearts for all you have done to help the healing process for so many in our community.

Enjoy in good health,

Katie Hanley, LMSW
Chief Executive Officer

Lisa Berman
Board President
July 2021 – June 2022

Judith R. Rosenthal
Board President
July 2022 – July 2023

Healing Emotional Trauma of Children and Adults

Jewish Family Services of Greater Hartford (JFS) offers a full scope of outpatient counseling services and psychiatric care provided by licensed therapists and psychiatrists. But the healing of these invisible wounds is not always accessible to all.

Tatiana (name and likeness changed to protect privacy) was seen at JFS as a teenager after her sister survived a suicide attempt, and she made great strides in therapy at that time. Then as a 30-year-old, she experienced a slippery slope when her sister ultimately died by suicide. Tatiana sought help at other local clinics but was unable to find a prescribing provider who would take her insurance. She remembered her positive experiences with JFS and reached out for help.

Tatiana works closely with us to process the challenging family dynamics that come with incredible loss. She is also in a toxic work environment, and she is afraid to leave and lose her insurance. JFS has assured her that she can continue her therapy regardless. We will stay with Tatiana on her healing journey.

Jewish Family Services accepts 22 forms of insurance including Medicare and Medicaid, and turns no one away for lack of funds.

This past spring, JFS hosted, **Together**, a series of community conversations to raise awareness about the mental health struggles faced by specific populations in Greater Hartford. All recordings are available at www.jfshartford.org/Together.



MENTAL HEALTH SERVICES



130

adults served



73

older adults served



15

individuals with
disabilities served



73

children and adolescents served



6,073

hours of therapy provided

Healing Residual Trauma of the Shoah

The trauma of the Holocaust did not cease when World War II ended. The ripple effect impacts not only the Survivors themselves, but their children (second generation) and future generations.

JFS supports 245 Survivors throughout Connecticut; and this population, with their history of unimaginable trauma, has a unique story to tell.

In a recent community event shining a light on the mental health challenges of Holocaust Survivors, panelist and clinical psychologist Lois Berkowitz (second generation) shared aptly, "There's no one road from trauma... What individuals experiencing trauma need depends largely on how they respond to the trauma that they've been through."

JFS provides essential therapy and social services for Holocaust Survivors throughout the state of Connecticut. The majority of clients in the program are considered very low income, and receive basic needs support from JFS through the Anja Rosenberg Kosher Food Pantry. They also receive funding to pay for special emergency services that Survivors otherwise would not be able to afford - like dental care, medical care, food, home care, transportation, utilities, home repair, and rent support.



HOLOCAUST SURVIVOR PROGRAM



155

clients in Greater Hartford



90

clients in Greater New Haven



\$1.3M+

in direct aid provided
to Survivors





Healing Hunger, Nourishing Our Community

JFS supports our clients with care and compassion. Our Jewish values guide our approach, and this is prominent in our food pantry program.

This year, we expanded our pantry so that our clients could be, once again, welcomed in to shop for themselves (a change from the pandemic-necessitated curbside pick-up experience). JFS's Anja Rosenberg Kosher Food Pantry is an essential support for the community, now nourishing over 700 people. Last year, we gave out 7,707 bags of groceries.

As a kosher food pantry, we recognize and honor the significance of adhering to these dietary standards for our clients. Additionally, our kosher food pantry makes our offerings universally accessible: while someone who keeps kosher or halal cannot eat just any food, anyone who does not keep kosher can enjoy what we offer. We accommodate other specific individual needs like food allergies, diabetes, gluten free, etc. and we offer special items like baby diapers, adult incontinence products, warm winter outerwear, sanitary and hygiene products donated by Dignity Grows, etc. We also have an on-site Jessie's Community Garden that provides fresh produce for clients, able to grow 120 pounds of food.



In Memorium

Jewish Family Services is heartbroken to have lost a beloved member of our community in February 2022, Gene Rosenberg was a lifelong advocate for those in need. Gene and the Rosenberg Family created the Anja Rosenberg Kosher Food Pantry in 2002, in honor of Gene's wife, Anja Rosenberg, to provide nourishment to people experiencing food insecurity. The world is truly a better place because of Gene. May his memory be a blessing.

ANJA ROSENBERG KOSHER FOOD PANTRY



708

clients served
(up 27% over the year before)



7,707

grocery bags distributed
(up 3% over the year before)



3,663

food pantry visits
(up 11% over the prior year)



3,380

dozen eggs distributed
(up 3% over the prior year)



2,745

challah distributed
(up 50% over the prior year)





Helping Older Adults Live Life Better

For over 15 years Care at Home by JFS has supported older adults in fulfilling their desire to age in place. Our efforts are uniquely tailored to preserve their dignity, safety, and independence based on capabilities; while being an ally and advocate for each family as if it were our own. In doing so, we have built strong, lasting relationships with both clients and their families.

Recently, after having the same caregiver for six years, our beloved Mr. Charles passed away. At the start of Mr. Charles's services, he was apprehensive about having "care", though he was noticing discreet changes in his day-to-day abilities. His Care Coordinator used the information gathered to match him with Iris, a compassionate, patient, and reliable caregiver who drives. Mr. Charles had been unable to drive and visit his friends in prior months. The very first day of service, Iris brought him to see his friends, and she noticed instantly how Mr. Charles came alive to be reunited with them.

A year later, Mr. Charles had a fall and he required full-time, live-in care. Iris continued to work side-by-side with Mr. Charles' and partnered with his physical therapy and occupational therapy team. After years of dedication and deep friendship, Iris was at his side and holding his hand when he passed.

At Care at Home by JFS, there have been many similar stories like Mr. Charles's and Iris's over the years. We are so honored to be in this field, working with such caring employees and extraordinary older adults.

<https://careathomebyjfs.org>

CARE AT HOME BY JFS



119

clients served



74,189

hours of care



98

caregivers provided support



JFS Programs

JFS supports the needs of the whole person. We meet people where they're at, help them heal, and address the barriers preventing them from embracing possibility in their lives.



The **ANJA ROSENBERG KOSHER FOOD PANTRY** provides food to anyone in need, whether it is an ongoing need or a one-time crisis. Nutritional counseling with a volunteer nutrition consultant is also available to clients.

The **JEWISH EMPLOYMENT TRANSITION SERVICES (JETS)** program helps people gain employment and advance their careers through workshops and one-on-one support.

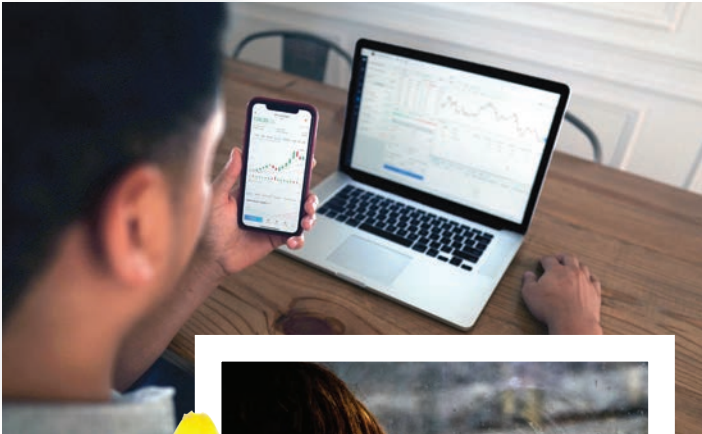
COUNSELING SERVICES offer counseling and psychiatric care with licensed clinicians for children, adolescents, adults, families, and older adults.

The **HOLOCAUST SURVIVORS PROGRAM** covers essential needs like dental bills, as the malnutrition survivors experienced in their past has damaged their oral health.

The **TEMPORARY ASSISTANCE FOR NEEDY FAMILIES (TANF) CASE MANAGEMENT PROGRAM** helps TANF (formerly Welfare to Work) recipients as they develop life goals, increase their income, and avoid eviction or utility shut-off notices.



JFS Programs



CARE AT HOME BY JFS strengthens the quality of life of our clients and their families, supporting older adults to live with dignity and independently.

THE VICTIMS OF CRIME ACT (VOCA) CASE MANAGEMENT PROGRAM aids survivors as they navigate the court system, helps them find them a safe place to live and helps victims to heal in the aftermath of crime.

The **MONEY COACH** program helps people take charge of their finances and their lives with expert help from a volunteer Certified Financial Planner.

JFS facilitates a Welcome Circle for **REFUGEES**, helping newcomers who have endured hardship to meet basic needs and acclimate to life in our community.

JFS helped over 2,000 clients to overcome barriers to their stability and wellbeing.

INDIVIDUALS SERVED IN FY2022

Anja Rosenberg Kosher Food Pantry

708

Jewish Employment Transition Services (JETS)

421

Counseling Services

289

Holocaust Survivor Program

245

Temporary Assistance for Needy Families Case Management (TANF)

133

Care at Home by JFS

119

Victims of Crime Act Case Management (VOCA)

107

Money Coach

55

Nutritional Counseling

7

Refugee Support

14

TOTAL SERVED UNDUPLICATED: 2,091

Major Grants and Funding

Gifts made between July 2021 and June 2022.



<i>Grantor</i>	
The Big Lots Foundation, Food Pantry	\$1,000.00
Ensworth Charitable Foundation, Bank of America, N.A., Trustee, Comprehensive Community Supports Program	\$15,000.00
William Caspar Graustein Memorial Fund, Anti-racism training	\$5,000.00
Jewish Community Foundation - CSB Building Reserve, Awarded to Jewish Federation of Greater Hartford on JFS's behalf	\$10,928.48
Jewish Community Foundation of Greater Hartford, Clinical Services Evaluation	\$30,146.00
Jewish Community Foundation of Greater Hartford, Life and Legacy Incentive Program	\$6,000.00
Jewish Federation of Greater Hartford	\$275,000.00
Jewish Federation of Greater New Haven, Uniper Program	\$25,000.00
Jewish Hartford Rapid Relief and Recovery Fund, COVID-related assistance	\$5,000.00
Jewish Federation of Connecticut (JFACT) DSS ORR, Refugee support	\$5,220.75
The JFNA Center on Holocaust Survivor Care and Institute on Aging and Trauma & NJHSA, Uniper Program	\$60,687.50
KAVOD SHEF, Holocaust Survivors Program	\$32,000.00
George A. & Grace L. Long Foundation, Bank of America, N.A., Trustee, Comprehensive Community Supports Program	\$3,000.00
George A. & Grace L. Long Foundation, Bank of America, N.A., Trustee, Food Pantry	\$3,000.00
George A. & Grace L. Long Foundation, Bank of America, N.A., Trustee, General Operating Support	\$5,000.00
Liberty Bank Foundation, Food Pantry	\$2,500.00
Micah Philanthropies, Comprehensive Community Supports Program \$250,000.00 over 4 years * Recognized as \$25,000.00 in FY2022 audit	\$250,000.00*
RBC Foundation - USA, JETS Program	\$10,000.00
Red Sox Foundation, Clinical Services	\$3,000.00
Red Sox Foundation, Food Pantry	\$1,000.00
State of CT Case Management Program for TANF and VOCA Recipients	\$135,503.00
Swindells Charitable Foundation, Bank of America, N.A., Trustee, Food Pantry	\$3,500.00
U.S. Department of Health & Human Services	\$20,398.60

*Conference On Jewish Material Claims Against German, Inc. (The Claims Conference) Fund **

Social services for Jewish Nazi victims have been supported by grant funding from the Conference on Jewish Material Claims Against Germany.

German Government Grant, Homecare, and Other Services*	\$1,486,312.00
Alfred Landecker Foundation, Inc. Holocaust Survivor Emergency Assistance Program**	\$28,867.70
Holocaust Survivor COVID Vaccine Assistance Fund from the German Government	\$5,742.00

Amount of direct aid provided to Holocaust Survivors, both Claims Conference and KAVOD SHEF: \$1,302,988.70

GRANTED TO JFS HARTFORD AND JFS NEW HAVEN ON A CALENDAR BASIS 2022

* Claims Conference funds are based on a calendar year

** Alfred Landecker Foundation, Inc., administered by the Conference on Jewish Material Claims Against Germany, for the benefit of needy Jewish Holocaust Survivors.

Hartford Foundation For Public Giving Funds

Basic Human Needs Fund, Food Pantry and other basic needs	\$9,000.00
Moses Stern Memorial Fund	\$3,092.43
Nonprofit Support Program (NSP) Financial Management Assessment Implementation Grant	\$50,000.00

Jewish Community Foundation

Gifts made between July 2021 and June 2022.

<i>Fund</i>	<i>Program</i>
Helene Alisberg Children's Fund	General operating support
Annie's Fund	Anja Rosenberg Kosher Food Pantry
Anonymous	Afghan refugee resettlement
Anonymous	General operating support
Anonymous	Jewish Employment Transition Services (JETS)
Anonymous XI Fund	Fund technology to support therapy
Beatrice Fox Auerbach Foundation Fund/Koopman Share - DBK	General operating support
Beatrice Fox Auerbach Foundation Fund/Koopman Share - RK	General operating support
Beatrice Fox Auerbach Foundation Fund/Koopman Share - TK	General operating support
Ida and Louis Blum Fund	Chronic needs program
Samuel and Frances Blumenthal Fund	General operating support
Lawrence S. and Arline "Lonnie" Brick Fund	General operating support
David L. and Barbara E. Brown Family Fund	Embrace-A-Child
Adam P. and Cynthia F. Cohen Family Fund	Anja Rosenberg Kosher Food Pantry
Naomi and Michael Cohen Fund for Jewish Family Services	General operating support
Penny H. Cohn Fund for Indigent Elderly	Transportation for low income seniors
Penny H. Cohn Fund for Indigent Elderly	Mental health care for low income senior adults
Morrison Danaher Family Fund	General operating support
Emmy and Steve Fast Fund for Jewish Family Services	General operating support
Hinda N. Fisher Fund	Older adults
Peter and Lisa Fishman Family Fund	Holocaust survivor mental health
Fox Family Fund	Anja Rosenberg Kosher Food Pantry
Robin and David Gelles Family Fund	Anja Rosenberg Kosher Food Pantry
Jay and Nancy Gershman Family Fund	General operating support
Ida C. and Milton Gladstein Family Fund	General operating support
Ida C. and Milton Gladstein Family Fund	General operating support
Karen and Gerald Goldberg Fund	Anja Rosenberg Kosher Food Pantry in honor of Gene and Anja Rosenberg
Ellen Jeanne Goldfarb Memorial Fund	Back-to-School Supply Drive
Harry E. Goldfarb Family Foundation Fund II	General operating support
Rona Gollob Fund	Embrace-A-Child
The Helping Fund II	COVID-related assistance
The Helping Fund II	Client basic needs
Jewish Family Services Board Fund	General operating support
Jewish Family Services Endowment Fund	General operating support
Jewish Family Services Legacy Fund	General operating support
Jewish Hartford Rapid Relief and Recovery Fund	COVID-related assistance
Johnston Family Fund for Jewish Family Services	General operating support
Deborah and Steven Kleinman Designated Fund	General operating support
Konover Coppa Family Designated Fund	General operating support

<i>Fund</i>	<i>Program</i>
Michele G. and Dane R. Kostin Family Fund	Hunger Event
Kostin JFS Fund in memory of Jean & Gersh Weil & Lou Goldstein	General operating, with a priority given to Jessie's Community Garden and programs related to feeding the hungry
Sharon Levine-Shein and Bruce Shein Fund for Jewish Family Services	Anja Rosenberg Kosher Food Pantry
Bernard Lieberman Memorial Fund	In-home counseling for older adults
Lillian Fund for Women and Girls	Anja Rosenberg Kosher Food Pantry in honor of Lauren Drazen and Melissa Weinstock
Mark and Merrill Mandell Fund for Jewish Family Services	General operating support
David and Lauri Miller Family Fund for Jewish Family Services	General operating support
Jason Miller and Elise Miller Charitable Fund	Volunteers working with Afghan refugees
Jason Miller and Elise Miller Charitable Fund	Support needs of Holocaust survivors
Podrove Family Fund	General operating support
Primason Dorman Family Fund	General operating support
Reynolds Charitable Foundation Fund	General operating support
Tara's Closet Fund	Tara's Closet
Rothstein Family Fund	Mental health counseling for children
Lea and Richard Rubenstein Fund for Jewish Family Services	General operating support
Gideon and Mary Rutenberg Family Fund	General operating support
A.I. Savin Family Fund	Tara's Mental Health Initiative
Amy Selzer Memorial Fund	Technology to support therapy
Amy Selzer Memorial Fund	Child advocacy training
Sylvia and Lewis Sheketoff Family Fund	General operating support; behavioral health
Lewis S. and Sylvia C. Sheketoff Jewish Family Services Fund	Chronic needs program
Siegal Family Fund for Jewish Family Services	General operating support
Siegal Family Fund for Jewish Family Services	Furniture and WiFi upgrades
Felix and Helene Springer Fund for Jewish Family Services	General operating support
Genevieve and Joseph Weinstein Fund for Senior Adults	Transportation for seniors
Genevieve and Joseph Weinstein Fund for Senior Adults	Uniper technology for older adults
Raymond S. and Gail Weinstein Fund	Chronic needs program
Zoë Isabelle Zachs Fund	Child advocacy training



Revenue and Expenses

Program Revenue

Grants & Contributions	\$2,392,899.00
Contributed Nonfinancial Assets	\$83,838.00
Fee Income (including Care at Home by JFS)	\$4,452,960.00
Other	\$206.00
TOTAL REVENUE	\$6,929,903.00

Expenses

Family Counseling	\$314,085.00
Older Adult Services	\$361,604.00
Benet A. Rothstein Child Services	\$304,789.00
Holocaust Survivors Program	\$877,900.00
Chronic Needs Services	\$96,129.00
TANF Case Management	\$73,019.00
Other Programs	\$517,987.00
Care at Home by JFS	\$3,413,838.00
TOTAL PROGRAM EXPENSES	\$5,959,351.00
General and Administrative	\$615,402.00
Fundraising	\$412,941.00
TOTAL EXPENSES	\$6,987,694.00

Financial statements as of and for year ended June 30, 2022 were prepared by JFS. Whittlesey provided audit opinion in accordance with auditing standards generally accepted in the United States of America. Fiscal year is July 1, 2021 through June 30, 2022. Copies of completed JFS audit are available upon request.

We Gratefully Acknowledge the Ongoing Support of Our Major Partners



Our Donors

Gifts made between July 2021 and June 2022.

We strive to recognize our donors accurately and in accordance with individual preferences. Please inform us of any errors by emailing info@jfs Hartford.org or calling 860.236.1927. Please accept our apologies for any oversight.

\$10,000+

Anonymous
Chase Family Foundation
Naomi and Michael Cohen*
Dornam Foundation
Harry E. Goldfarb Family Foundation
Amy and Jim Goldman
Nancy and Jeffrey Hoffman
Andrew J. and Joyce D. Mandell Family Foundation
Merrill and Mark Mandell*
Ann and Jeremy Pava
Sarah and Rob Rosenberg
The Rosenberg Family
Barbara Roth
The Harold I. Rothstein Family Foundation
Lori and David Wetsman

\$5,000 - \$9,999

Anonymous (2)
Cynthia and Adam Cohen*
Kenia and Jose Espinosa
Karen and Gerald Goldberg
Blanche and Steve Goldenberg
Ed Hendon
Peggy and Roy Hester
Hoffman Family Charitable Fund
Ross Hollander
Joann Chapel and Bob Kaufman
Debbie and Steve Kleinman*
The Konover/Coppa Family Foundation
Michele and Dane Kostin*
Cheryl and David Lejfer
Thomas Liddell
Janice and Rodney Reynolds
Gideon Rutenberg
Naseem Rakha and Chuck Sheketoff
Lois Siegal
Gayle and Steve Temkin
Mary-Jane Eisen and Bob Yass
Zachs Family Foundation, Inc.*
Natalie and Morris Ziplow Fund*

\$2,500 - \$4,999

Lisa and Evan Berman*
Elaine Charendoff
Beth and Joe Fox*
Debbie and Richard Glassman*
Joan and Gary Greenberg
Lois and Chuck Koteen*
Jeffrey Kubas
Lisa Weisinger-Roland and Phil Roland
Judy and Jerry Selzer
Helene and Felix Springer
Patti and Howard Weiner*
Ronna Wheeler
Sandy Zieky and Michael Wilder z"l*

\$1,000 - \$2,499

Frances Blumenthal
Donna and Andy Bricker
Trudy and Louis Brown
Charmaine Chumbley
Jennifer Coffey
Paul Cohen
Ann and Bernie Cope
Harriet Cutler*
Suzy and Josh Ehrlich
Cheryl and David Epstein
Emmy and Steve Fast
Jillian and Josh Feldman
Robin and Brian Fierston
Cheryl and Norman Fine
Lisa and Peter Fishman*
Molly and David Fried
Helen and Henry Frye
Francine L. and Robert B. Goldfarb
Arthur and Zabelle Krasow Greenblatt
Jennifer and Brian Grosberg
Debra Guyan
Meredith and Jonathan Hargreaves
Carol and Neale Hauss
Jill and Brad Hutensky
Lenore and Howard Iger
Catherine and Richard Kaplan
Debra and Howard Katz
Ronit and Rafi Kaufman
Charna and John Kaufman
Myra and William Kleinman
Elisabeth Kostin and Doron Roth*
Alan Krecsvko
Alys and Jack Krichavsky
Marcia and Michael Krinsky
Karen and Morris Later
Scott Lerner
Elaine and Jerry Leshem
Tammy Levine
Lynn and Joel Malkoff
Fran and Allen Maltz
Dhurata and Ron Margolis
Carole and Mike Mazer
Lauri and David Miller
Arlene and Dan Neiditz
Brian Newman
Beth and Dan Papermaster
Lynn and Rob Preminger
Lisa and Eric Reimer
Diane and Richard Rosenberg
Judy and David Rosenthal*
Bonnie and Jay Roston
Linda and David Roth
Lea and Richard Rubenstein*
Beth and Bernie Schillberg
Alan Schwedel
Jaime and Mark Seltzer
Joan and Paul Shapiro

Gale and Larry Shapiro*
Arline and Stuart Small
Dianne Snieder
Leigh Newman and Gary Starr*
Sylvia and Michael Taub
Gail and Ray Weinstein
Melissa and Randy Weinstock
Zoë Zachs

\$500 - \$999

Anonymous (2)
Carrie Berman and Ron Apter
Lee Ann and Claudio Benadiva*
Ginny Murray and Richard Bennink
Rabbi Ilana Garber and Adam Berkowitz
Phyllis and Bob Berman
Larry Blitstein
Lisa Bourke
Barbara and David Brown
Shelley and Alan Cetel*
Sandy and Arnold Chase
Janet and Stanley Cohen
Joshua Cohen
Anne and John Danaher
Donald Davidson
Tanya Dorman
Caroline Buckley and Alan Dunlea
Susan and Lonnie Edelheit
Amy and Jesse Eisler
Jeanie and David z"l Federman
Risa and Roy Filkoff
Sue Fulleton
Robin and David Gelles
Nancy and Jay Gershman
Wendy Amblo and Bill Glucksman
Monica and Lee Gold
Felice Goldman
Rona Gollob*
Michele and Dan Gottfried
Arnold Greenberg
Arthur Greenblatt
Nicole and Josh Greenblatt
Jennifer Greenlaw
Merle and David Harris
Jennifer and Randy Herz
Corinne and Michael Johnston
Alex Justice
Martha and Mike Kalen
Bobbie Woronow and Ted Kaplan*
Vicki and Michael Konover
Cara and John Koster
Roberta and Lewis Kurlantzick
Fran and Fred Landy
Jean Lasser
Ira Levin
Judie and Coleman Levy
Karen and Rob Ludgin
Anne and Paul MacDonald



Our Donors

Gifts made between July 2021 and June 2022.

Irene and Stuart Mahler
Ellen and Morris Morgenstein
Doreen Natelle
Alyssa, Joel, and Eliot Norwood
Dorina Paritsky
Pearl Podrove
Maryanna and Konstantin Polukhin
Barbara Portnoy
Noel Reid
Maureen Klapatch and Gerald Roisman
Nancy Rosenbaum
Meachelle and Paul Roy
Kyle and Joel Sable
Carla and Steve Schwartz
Dale and Edward Schwartz
Janet and Steven Selden
Mary Anne Steadman and Harlan Shakun
Sharon Levine-Shein and Bruce Shein
Elaine and Howard Smith
Jay Smith
Ann Smith*
Susan and Alan Solinsky*
Emily and Norman Sondheimer
Iris and Eric Spungin
Deborah Tedford
Diane and Jeff Wasser
Jodi and Brett Wasserlauf
Jane and Ross Weiner
Judi and Edward Weingarden
Jerry Wise
Jessica and Eric Zachs
Rabbi Rachel Zerin
Doreen Fundiller-Zweig and
Elliot Zweig

\$100 - \$499

Anonymous (6)
Rina and Micha Abeles
Alison Abend
Nancy Alisberg and Michael Albano
Susan and Gerald Aldrich
Steven Allen
Esther Apter
Esther and Stephen Aronson
John Babina
Irma and Boris Barishpolsky
Shelley and Michael Barker
Ami and Mark Belsky
Courtenay Berckemeyer
Sue and Bruce Bergman
Brenda and Malcolm Berman
Donna Berman
Carolyn and Stuart Bernstein
Marcie Berson
Miriam Bleich
Block and Saffir Family Fund
Linda and Steven Blotner
Jacqueline Isaacson and
Louis Blumenfeld

Carol and Erica Bonfiglio
Judith Bramson
Miriam and Rabbi Tuvia Brander
Meryl and Scott Braunstein
Lonnie Brick
Victoria Bricker
Nadine and Bob Britton
Janet and Robert Bruner
Talia Burkhardt
Shari and Michael Cantor
Joanne and Alex Capo
Marilyn and Ralph Caramanica
Janice Cartin
Tina and Sebastian Caruso
Rhoda and David Chase Family
Foundation, Inc.
Ingrid Chorchos
Harry Cion
Ann and Richard Cohen
Arnold Cohen
Ellie and Peter Cohen
Jonah Cohen
Josh Cohen
Judi and Michael Cohen
Karen and Lawrence Cohen
Linda Cohen
Rachel Cohen
Susan and Sam Cohn
Ellen Robinson and James Condren
Judith Cosenza
Judy and Lauren Daman
Sheila and David Diamond
Veronica and Steve Dicke
Thomas Divine
Deb and Bill Doran
Hollis Dorman
Esther Drezner
Mary Ann Dubin
Larry Dvorin
Marianna and David Eckstein
Brenda Edwards
Ellen Eisenberg
Gail Gillman Elansky and David Elansky
Anna and Michael Elfenbaum
Janice and Sydney Elkin
Pamela Ellavsky
Sharon Eller
Christine Farber
Ellen Farber
Amy and Eric Federman
Deborah and Ira Feigenbaum
Raphael Feigenbaum
Faye Dion and Michael Feldman
Julia Rosenblum and Len Felson
Terry Fetterman
Joni and Daniel Fine
Bella and Judd Fink
Debra and Bruce Fischman
Camille and Steve Fish

Evelyn and Michael Fishman
Muriel and Karl Fleischmann
Stephanie Fox
Felicia Wilion and Jay Frankel
Shari and Ed Freeman
Sharon and Martin Freilich*
Nathalie Friberg Palazzo
Laura and James Friedman
Margaret Fuller
Marcia and Mike Garfinkel
David Gauthier
Sally and Ernest Gelb
Loren and Joel Gelber
Rona and Barry Gelber
Carolyn and Jeffrey Gitlin
Rachel and Spencer Glantz
Susan and Robert Glasspiegel
Ruth Gold
Beth Goldberg
Eric Goldberg
Frances Gurtman and Richard Goldberg
Eleanor and Jonathan Goldman
Fredda and Jon Goldstein
Laurie and Seth Goldstein
Pat and Arnie Goldstein
Ann Gowdey
Karina and William Goykman
Galya and Jonathan Greenberg
Johanna and Jeffrey Greenfield
Marilyn and Jeffrey Grody
Janna and Jeffrey Gross
Lois Lourie and Michael Gurtman
Sharon and Barry Haight
Katie Hanley and Jeremy Baver*
Gerald Harris
Kathy and Brian Hartnett
Sylvia Heiman
Rhonda and Jim Heisler
Alexis Hersh
Nancy and Steven Hershcopf
Laura and Matthew Herz
Marcey and Brian Hickey
Cheryl and John Hinze
Marvin Hoberman
Dorrie and Kim Hunt
Rita Isaacson
Robert Jackson
Sheila and B. Theodore Jacobs
Mitchell Jaffe
Mindy and Jeremy Jason
Charlotte and Brook Jason*
Myra Johnson
Susan and Allen Kallor
Julie Krug and Jonathan Kaplan
Cathy and Geoffrey Karp
Pat and Alan Karp
Lynn and Bob Katz
Rosalind Katz
Amanda and Aaron Katzman



Barbara Katzman
Rachele Katzman
Louise Kaufman
Dana and Jonathan Keller
Irma Keller
Norlyn and Dennis Kessler
Bobby and David Klau
Abigail Klingbeil
Gale and Bernie Kosto
Nancy Kramer
Debra Eyges and Andy Krevolin
Judith and Allen Kronick
Heidi and Jay Langan
Shelley and Robert Langer
Barbara and Bill Lavine
Joanne and Mitchell Leibovitz
Nancy Leibovitz
Maxine and Manuel Lerman
Ellen and Mark Lescher
Jannine and Edward Leshem
Amy and Gary Levin
George Levine
Larry Levine
Paula and Mark Levitz
Liz and Todd Liebman
Arlene and Lenny Lippman
Margaret and Augustus Lococo
Jane and Roger Loeb
Shana Loitz
Paulette and Jim Lotstein
Wendy Lyon
Allene and Marc Madnick
Christine and Seth Mahler
Julie and Robert Malkin
Richard Manganiello
Jean and Peter Manz
Ona and Thomas Mastronarde
Ellen and Allan Mayer
Chris McBrayer
Shereen Edelson and Arnold Menchel
Judy and Harold Meyer
Lori and Doug Meyerson
Tiana, Sebastian, and Angelina Miano
Regina and Don Miller
Stacy Millman
Marcia Mizrahi
Michael Morrison
Jan and Harold Moskowitz
Juanita and Yitz Moss
Martha Moss and Ronald Moss
Regina Moss
Esther Multer
Marcey Munoz
Sandra and Michael Myers
Doris and Richard Nabel
Alice and Robert Naboichek
Susie Namerow
Sandi and Marc Needelman
Ilene Kaufman and Bruce Newbold

Constantza and George Nicorici
Ellen Sanders-Nirenstein and
Jeff Nirenstein
Marylin and Arthur Noll
Lisa and Bill Nollman
Elinor and Louis Norton
Cynthia O'Neill
Leah and Andy Paller
Michele and Alan Parker
Erin Pastuszak
Robert Pearce
Ron Peikes
Diane Kirkman and Eric Persky
Barbara Pinkerton
Brandon Pizzoferrato
Lisa and Rabbi Richard Plavin
Karen and Jeffrey Polinsky
Natalie and Lee Pollock
Roselie and John Polo
Philip Post
Steve Rabb
Karin and Lawrence Rappaport
Elaine Reid
Joan and Allan Reiskin
Judy and Frank Resnick
Leslie Rifkin
Melissa and Rod Rockoff
Cynthia and Philip Rockwell
Nancy and Rabbi Jim Rosen
Ellen and Michael Rosenberg
Larry Rosenberg
Margaret Rosenberg
Michael B Rosenberg
Daniel Rosenfeld
Stephen Rosenthal
Ellen and Stuart Roth
Leslie and Steve Rotman
Barbara and Robert Rowson
Barbara Rubin
Jane and Gary Rubin
Nicola Rubinow
Rachel and Jason Rudnick
Sandra and Marshall Rulnick
Robbie and Rabbi Paul Saal
Robin and Rafael Santiago
Robert Schatz
Paula Schenck
Judy and Ron Schlossberg
Jacob Schreiber
Diane and Alan Schuman
Toby and Art Schuman
Laura and Hailey Schuntermann
Merle and Lawrence Schwartz
Nancy Lee Schwartz
Alissa Schwarz
Rebecca Scorso
Eileen and Mark Seiger
Lea and Bernie Selig
Laurie and Marshall Shakun

Liz and Stephen Shamroth
Patricia Shapiro
Jenny Shmuel
Jeremy Sholovitz
The Shulansky Foundation, Inc.
Susana Sibrian-Alvarenga
Elaine and Robert Siegel
Ronny and Elbert Siegel
Laurie and Isaac Silverman
Elizabeth and Adam Simmons
Barbara and Richard Sinclair
Claudia Sklar
Hyla Sklar
Jessica Slater
Mark Slitt
Deborah Figarsky and Phillip Small
Ina Smernoff
Meredith and Stephen Smith
Barry Snyder
Sally and Peter Solomon
Carolyn Sorkin
Ruth and Howard Sovronsky
Dora and Rabbi Howard Sowalsky
Selma Starr
Beth and Martin Stauffer
Linda and Martin Stein
Paula Steinberg
Helen and Jonas Steiner
Johanna Steper
Jill Stoner
Anita Tremarche and Alan Strong
Michelle Kunzman and Steve Szafman
John Takacs
Andrea and John Tannenbaum
Lois and Jason Tanzer
Maria Miller and John Thomas
Cheryl Valenti
Amy Veroff
Boris Virkerman
Jack Vogel
Miriam Wachsman
Florrie Weber
Janet Willits and Michael Weber
Ruth and Myron Weiner
Laurie Mandell and Richard Weinstein
Leslie and Richard Weinstein*
Linda Weintraub
Judy and Joel Weisman
Lorrie and Randy Wexler
William White
Sarah Willen and Sebastian Wogenstein
Jennifer and Steve Wolfberg
Rafael Wurzel
Mara and Oran Yacobi
Theodore Zachs
Ellen and Steven Zelman
Zachary Zimmerman
Judith Zipkin
Barbara and Ted Zupnik

Our Donors

Gifts made between July 2021 and June 2022.



Up to \$99

Anonymous (6)
Ruth Alcabes
Lisa and Lance Alpert
Marci and Jonathan Alter
Howard Altmann
Michael Altschuler
Shelly and Don Aronson
Nancy and George Bacall
Sharon Baj
Lorraine and Tom Barber
John Barrows
Melanie Bazer
Rabbi Debra Cantor and Jim Beede
Karen and Marshall Berger
Marilyn Berkman
Ruth and Bert Berlin
Emily and Todd Berman
Lisa and Robert Berman
Rebecca and Jim Berman
Sarah Bernstein
Roberta and Harry Berry
Leah and Larry Berson
Diane Bigelow
Elena and Andre Bitton
Lenore Blank
Allison and Michael Bloom
Jeannine and Christopher Borowiec
Ruth and Sherwin Borsuk
Judith Borus
Sandy and Bob Bourke
Ann and David Brandwein
Kimberly and Edmund Brathwaite
Aviva and Matt Braunschweiger
Susan and Bill Breslau
Mimi Bright
Susan and Jeffrey Brine
Stacy Bronstein
Jen and Louis Bucari
Emily and Peter Buch
Bobbi and Newton Buckner
Cynthia Calderon
Janet Camhi
Miriam Chaiklin
Jean and Leon Chameides
Mary Anne Charron
Edward Chestler
Ruth Cion
Lorry and Martin Clayman
Dale Cohen
Donna and Harold Cohen
Dorothy Cohen
Karin Cohen
Sam Cohen
Samuel Cohen
Linda and Henry Cohn
Ellie Cooper Bell
Adrienne and Lawrence Cooperman

Nessie Cormier
Marilyn Cremer
Sandy Cummings
Trang Dao
Diane and Harry Davidson
Alison and Ed Demarest
BJ and Leonard Diamond
Elana DiFazio
Sharon and Robert Efron
Linda and Sheldon Eisenberg
Lois Ellovich
Myra Emrick
Norma Epstein-Fishman
Phyllis Grable-Esposito and
Christopher Esposito
Wendy Fair
Judy and Jacob Farber
Betty and Seth Feigenbaum
Joyce Kamanitz and Tom Feldman
Nancy Fichman
Ellen Fisher
Ellen and Paul Fleming
Alexandra Flowers
Emily Forman
Judy and Fred Fox
Sheila and Theodore Fox*
Arthur Freedman
Linda Fricke
Roz Fudell
Elayne and Steve Futernick
Carolyn and Andrew Ganeles
Lisa Gassner
Sandy and Mark Gassner
Roberta Slitt and Michael Gatter
Annette Gavens
Robin Gebrian
Jonathan Gelber
Carol Gershenson
Zane Gershman
Karen and John Gilligan
Alan Gittleman
Rhoda and Todd Gladstone
Stanley Glantz
Joyce and Sidney Glassman
Myra and Jerome Gold
Deborah Prince and David Goldberg
Ellie and Mark Goldberg
Michele Goldberg
Sandy and Bruce Goldberg
Susan and Hugh Goldberg
Susan and Paul Goldberg
Shera and David Golder
Marc Goldstein
Roy Goldstein
Kathryn Gonnerman
Bob Gordon
Rebecca and Martin Gould
Thomas Graf

Jean and Stan Greenberg
Libby and Aaron Greenblatt
Carrie Greenspan
Joan Grody
Deborah and Richard Gutcheon
Erica Bloch and Mark Haims
Kelly Hamann
Joan and Bill Handler
Rachel Hansen
Evelyn and Bob Harris
Joni Harris
Faith Helene
Claire Henderson
Sharon Danaheer Henry and Rich Henry
Anne Herlihy
Judy and Gary Herman
Lotte Hershfield
Pamela Smith and Charles Hilborn
Mary Hoermann
Betty and Herbert Hoffman
Ferne Hoffman
Sharon and Grant Holtzberg
Janis Homar
Carolyn and Robert Isakson
Susan and Arthur Israel
Shirley Jacobs
Nancy and John Jacobson
Nancy and Manny Jainchill
Lele and Ralph Kadden
Gerald Kalb
Madeline Kalotkin
Rita and Baruch Kantor
Eva and Michael Kaplan
Regina Karas
Sue and Bob Karn
Jeffrey Kass
Leah Katz
Tobie Katz
Rhoda Kaufman
Shira Kazandzhi
Susan Kelly
David Kelman
Kimberly and Jeremy Kempner
Patricia Kiely
Marge Kirchheimer
Naomi and Joel Kleinman
Arleen Kline
Matthew Kochen
Carol and Buz Kohn, Jr.
Michelle and Rabbi Randall Konigsburg
Evelyn and Larry Krain
Lucinda and Joel Kramer
Nancy Beller-Krieger and Krieger
Nancy Kursman
Gail and Dan Lacugna
Stephanie and Justin Landrie
Ruth and Rabbi Philip Lazowski
Jen and Marc Lehman

Phyllis Lehman
 Robert Lerman
 Moira and Steven Leshem
 Julie Levine
 Marjorie Levine
 Peter Levine
 Sheila Levy
 Alberta and Steve Liebman
 Gilda Liebowitz
 Beth Lomasky
 Richard Lowry
 Debra and Steven Luger
 Alla and Leonid Malakh
 Pat Mancinelli
 Judy Mandel
 Ellen and Jerry Margolis
 Sheila and Howard Mark
 Kimberly Cohen and Adam Marks
 William Marut
 Ursula Marx
 Ashley Samantha Mascola
 Bernice Matty
 Patricia McCabe
 Ginny Sandman and Doug McCarroll
 Wendy McDonald
 Edie Meade
 Debbie and Peter Mehlman
 Michael Miles
 Trudy and Edward Milikow
 Christi and Eric Miller
 Laura and Stuart Miller
 Rena Miller
 Mirta Minetto
 Beatrice Mitlak
 Megan Motley
 Gary Muth
 Jesse Muth
 Barbara Nair
 Maura Nemirow
 Mina and Barry Nemirow
 Avra Novarr
 Maureen O'Connell
 Edina Oestreicher
 Denise and Richard Order
 Mickey and Mitch Orkin
 Dale Osborn
 Elena Ostrovsky
 Yaffe and Marc Palter
 Marta Papoosha
 Barbara Parker
 Faith and Bruce Parker
 Ivy and Avi Patt
 Andrea Patten
 Laura Pels
 Randi and Rabbi Michael Pincus
 Susan Pleasant
 Allan Polak
 Susan Poriss

Colleen Porth
 Jacquelyn Procyk
 Bonnie Pumerantz
 Jenny and Stuart Rabinowitz
 Rosalind Rachlin
 Mandy Rahardjo
 Gail Reiner and Family
 Lori and Lance Reiser
 June and Richard Renert
 Barbara Ricketts
 Ceila Robbins
 Hannah Robbins
 Mary Rocco
 Joanne and Arthur Rome
 Rita and Milton Rosenberg
 Deborah and Glen Rosenfeld
 Bobbi and Alan Rozinsky
 Laura Maltz Rozza and Dave Rozza
 Vivianne Rubin
 Laurie Rudman
 Susan and Jesse Samuels
 Monique and Richard Schatten
 Susan Fierberg and Howard
 Scheinblum z"l
 Stephanie and Robert Schenkel
 Susan and Michael Schenker
 Julie Schlossinger
 Lea and Alan Schmerler
 Lara Schneider-Bomzer
 Edna Levy and Jacob Schreiber
 Sydney Schulman
 Lonni and Phil Schulz
 Lisa and Gary Schwartz
 Paula Schwartz
 Robin and Adam Schwartz
 Stacey Scruggs
 Susan and Marshall Seidman
 Jean and Mike Selinger
 Inna Zhitomirsky and Igor Shamshtein
 Annette and Paul Shapiro
 Sheila and Dick Shechtman
 Allison and Ari Shell
 Joanne Shimelman
 Ronit Shoham and Family
 Hillary Sibille
 Debra Sidewater
 Joy Sieklucki
 Hilary and David Silver
 Judy Silver
 Fredric Singer
 Judy and Irwin Singer
 Roberta and Bruce Singer
 Sharon Sklar
 Caroline Smith
 Eric Sondergeld
 Melton Spivak
 Jennifer Starble
 Rhoda Steinberg

Shira Eliassian and Jonathan Steinmetz
 Ruth Stern
 Francine and Steven Stier
 Mindy Stockfield
 Kathy Suisman
 Marcia and James Sutton
 Leonard Swade
 Marge and Ricky Swaye
 Anne-Paul Swett
 Philip Thierman
 Linda Toce
 Nancy Trevor
 Carol and Joseph Troiani
 Amir Tulchinsky
 Tara Turken
 Ellie Udolf
 Barbara Ungar
 Steven Vitoff
 Lorraine and Farrel Vogelhut
 Marcia and David Waitzman
 Jennifer Marvin and Jason Wasserman
 Frances and Paul Weinberger
 Nancy and Dan Weissmann
 Helene and Allan Weitz
 Rachel Welcome
 Linda Winer
 Tom Witt
 Ann and Mike Wolf
 Barbara and Chuck Wolfe
 Polly Young
 Vivian Zablotzky
 Lorie and Mark Zackin
 Muriel z"l and Bill z"l Zeldis
 Elizabeth Zelek
 Shirley Zelman
 Karen and David Zetoff
 William (Woody) Zinkerman



** donor to Endow Hartford 21 during
 this report period.*

*z"l is a Hebrew abbreviation
 indicating that this person passed and
 is fondly remembered.*

Corporate and Community Partners



Accounting Resources, Inc. (ARI)
 B'nai Tikvoh-Sholom
 Baronet Coffee Roasters
 Beth David Synagogue
 Beth El Temple
 Beth Sholom B'nai Israel
 Big Y Foods, Inc.
 Bob's Discount Furniture
 Brighton Collectibles
 Camp Shalom
 Carmon Community Funeral
 Homes, Inc.
 Center for Children's Advocacy
 C.I.G. Private Wealth Management
 CLA (CliftonLarsonAllen)
 Conference on Jewish Material
 Claims Against Germany, Inc.
 Congregation Beth Israel
 Connecticut Children's Medical
 Center
 Connecticut Council of Family
 Service Agencies
 Connecticut Historical Society
 The Connecticut Immigrant &
 Refugee Coalition (CIRC)
 Connecticut Foodshare
 Council on Accreditation
 CPTV
 The Crown Market
 CT Nonprofit Alliance
 CTEC Solar
 Data-Mail, Inc.
 Deeds for Needs
 The Diaper Bank of Connecticut
 Dignity Grows
 Emanuel Synagogue
 Endow Hartford 21
 GYL Financial Synergies, LLC
 Hartford Foundation for Public
 Giving
 Hartford HealthCare
 Hartford Healthcare Institute of
 Living
 Hartford International University
 for Religion & Peace
 Hebrew Senior Care
 Hoffman Auto Group

Hoffman SummerWood Senior
 Living Community
 Integrated Refugee & Immigrant
 Services (IRIS)
 Jewish Community Foundation of
 Greater Hartford
 Jewish Children's Service
 Organization (JCSO)
 Jewish Association of Community
 Living (JCL)
 Jewish Family Services of Greater
 New Haven
 Jewish Federation of Greater
 Hartford
 Jewish Federation of Greater New
 Haven
 Jewish Historical Society
 Jewish Federation of Connecticut
 (JFACT)
 The JFNA Center on Holocaust
 Survivor Care and Institute on
 Aging and Trauma
 Jewish Federations of North
 America (JFNA)
 Jewish Teen Learning Connection
 (JTConnect)
 Karn Couzens & Associates
 KAVOD SHEF
 LAZ Parking
 Leading Edge
 Lesro Industries, Inc.
 Liberty Mutual
 Life & Legacy™
 Liquid Nirvana
 L.J.S.A. Cohen Family Fund
 Mandell JCC of Greater Hartford
 Marcus Insurance
 Max Cares Foundation, Inc.
 Midwest Food Bank
 Minyanettes (Federation
 Havurah)
 NCCJ
 NEFCO Corporation
 Network of Jewish Human Service
 Agencies (NJHSA)
 New England Jewish Academy
 Paragus Strategic IT

PASI, LLC
 Pension Consultants, Inc.
 PJ Library Greater Hartford
 The Pleasant Realty Corporation
 Rogin Nassau, LLC
 S & S World Wide
 Elayne & James Schoke Jewish
 Family Service of Fairfield
 County
 Secure Community Network (SCN)
 ShopRite of Canton
 Solomon Schechter Day School
 Staples
 Moses Stern Memorial Fund at the
 Hartford Foundation for
 Public Giving
 Stop & Shop
 Story and Soil
 Streetware, Inc.
 TD Bank
 Town of West Hartford
 Trinity's Zachs Hillel House
 UCONN Hillel
 United Way of Central and
 Northeastern Connecticut
 United Way of Coastal Fairfield
 County, Inc.
 University of Hartford Hillel
 Voices of Hope
 Wentworth, DeAngelis & Kaufman
 Young Israel of West Hartford

Endow Hartford 21 is a matching gift program, initiated by the Zachs Family Foundation and contributed to by other lead donors, to support an endowment to benefit JFS.

Life & Legacy™ is a program of the Harold Grinspoon Foundation that promotes legacy giving and endowments to ensure the long-term sustainability of JFS.

Thank you to Jewish Community Foundation of Greater Hartford for administering these programs.

Board of Directors

Leadership appears in bold

*Board at time of 2022 fiscal year
(July 2021–June 2022)*

Todd Bell

Lisa Berman, President

Adam Cohen

Michael N. Cohen

Vernonica Dicke

Tanya T. Dorman

Sydney Elkin

Jillian Feldman

Richard Glassman

William Glucksman

Rose Gomez

Bob Karn

Charna Kaufman

Steven Kleinman, Treasurer

Bill Kleinman

Merrill Mandell

Maura Nemirow

Naomi Neuwirth

Robert Preminger

Lisa Reimer

Maxien Robinson-Lewin

Anja Rosenberg, First Vice President

Pia Rosenberg Toro, Chairwoman of the Board

Judith R. Rosenthal, Second Vice President

Fred Schpero, Assistant Treasurer

Harlan Shakun

Ann R. Smith

Gayle Temkin

Melissa Weinstock

Lisa Weisinger-Roland

Steve Wolfberg

Sandy Zieky



Staff

Management appears in bold

Staff at time of publication (January 2023)

Luciano Abbatemarco, LCSW, Clinician

Seva Azimov, Case Manager, Russian-Speaking
Older Adults

Svetlana Berlinsky, LCSW, Clinician

Miriam Brander, Chief Operating Officer

Donna Cassidy, Care Coordinator, Care at Home
by JFS

Susan Constantine, Recruiter and Trainer, Care
at Home by JFS

Jonathan Covault, MD, Psychiatrist

Clina Dawes, Case Manager, TANF Program

Brenna Doyle, Director of Programs and Systems

Rachel Friedman, Administrative Assistant

Randee Gileau, Accounting Specialist, Care at Home
by JFS

Emily Goodwin, LMSW, Clinician

Katie Hanley, LMSW, Chief Executive Officer

**Aimee Hass, LCSW, Director of Behavioral
Health Services**

Iris Hooks, Case Manager, VOCA Program

Erica Kapiloff, Case Manager, Holocaust Survivor
Program

Patricia Kiely, Project Manager

Elisabeth Kostin, Director of Development

Mary Beth Lang, LCSW, Clinician

Nancy Lichtenberg, LCSW, Clinician

Anika Maybin, Care Coordinator Specialist,
Care at Home by JFS

Zenobia McKnight, Office Manager

Naté Paige, Program Administrator, Care at Home
by JFS

Colleen Porth, LCSW, Clinician

Elaine Reid, Director, Care at Home by JFS

Deborah Rosenfeld, Development and Marketing
Coordinator

Laura Maltz Rozza, Director of Grants

Gurender Sahani, MD, Psychiatrist

Julia Samuels, MSW, School Social Worker

Laura Miacola, Volunteer Coordinator

Jonas Steiner, LCSW, Clinician

Alicia Walker, Client Support Specialist

Patti Weiner, Development Officer

Kimberly Whittingham, LPC, Clinician



Jewish Family Services

Embracing Possibility.

333 BLOOMFIELD AVE, SUITE A

WEST HARTFORD, CT 06117

860.236.1927

jfshartford.org

